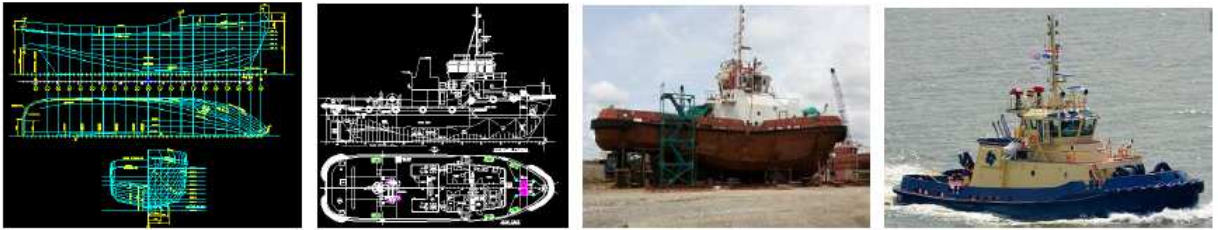




### LINTECH SEASIDE FACILITY ( LSF )

## Shipbuilding Construction



**PT. LINTECH DUTA PRATAMA** is a company engaged in the field of steel construction. In addition to steel construction, one of **PT. LINTECH DUTA PRATAMA** business was the construction of the new ship building, repair, docking and maintenance of ship. All development activities of new ship building and repairs will be done by our Lintech Seaside Facility ( LSF ) located at Paciran Lamongan ( approx. 74 Km from Surabaya )

We can create several kind of ship, start from the intital design up to execution of the projets. All of design will be handled by experienced designers. All ship design refer to specification and requirement from the owner and comply with Class and Rule Regulation. With our slip way facility about 90 meters width and about 200 meters long and our workshop facility, we are able to build different types of ships such as Tankers, Cargo Ships, Container Ships, AHTS, Tug boat, Roro Ferry, Passenger Vessel, Fuel Oil and Coal Barge, LCT and Aluminium Patrol Boats. Quality is our priority and we are believe that everything can make it happened.

## Ship Conversion



From a structural point of view, any changes of the ship structure is to be regarded as a conversion, from alteration of the main dimensions (such as length, breadth, depth) to installing thrusters, generators, cranes or winches, etc.

The following aspects are also treated as conversions :

- Increasing the maximum allowable draught
- Modifications reported by surveyors that have not been approved by Class in advance
- Change of flag, provided the new flag State has additional requirements
- Adding new class notations normally implies new requirements
- Class transfer from a classification society that is not a member of IACS



### LINTECH SEASIDE FACILITY ( LSF )

## Ship Repair & Maintenance ( Docking )



Indonesia is an archipelago country. Most of the area is the ocean. The most effective means of transport by sea is the ship. Every day hundreds of even thousands of sailing ships in Indonesia. To support the smooth running of operations needed a reliable and ship ready to sail. The Bureau of classification and Port of Authority requirement that ships have to be viable and safe at sea while sailing at sea.

From the requirement of Classification Society, all shipping companies must always take care of his ships.

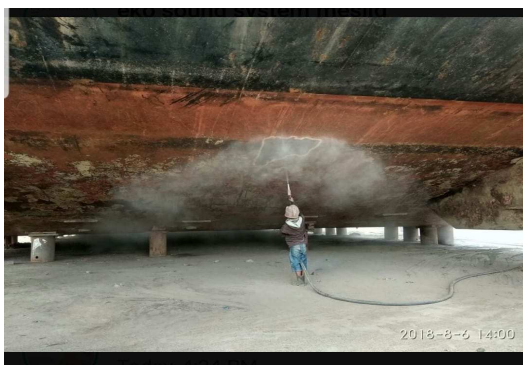
**PT. LINTECH DUTA PRATAMA** ready to support that desire. We are ready to repair maintenance as well as docking the ship.

Our facility consist of very big Slip Way with appropriate towing winch to tow the boats before and after dry docking. All workshop complete with overhead crane and all necessary support for fabrication purpose. We are also supported by competent experts in their field.

**PT. LINTECH DUTA PRATAMA** will support all of the activity related to maintenance and docking of ship.

Our scope of work consist of :

- Hull Construction Part : Hull hand scrapping, Water jet cleaning, Sand blasting, Re-plating & Painting
- Machinery Part : Repair & maintenance of Main Engines, Shaft, Propeller, Rudder, Auxiliary Machinery & Deck Machinery. Piping & Valves overhaul & renewable. Repair of Steel work such as foundation of equipment, sea chest & ducting..
- Hull Accommodation Part : Repair & maintenance of Ceiling, Lining, Doors, Floors, Toilet, Bathroom, Pantry & safety appliances. Renewable of accommodation part.
- Electrical Part : Repair & Maintenance of Main Switch board, Electric Panel, Nav.Com equipment , Cables





## LINTECH SEASIDE FACILITY ( LSF )

### Facilities

- ❖ 16 Ha Storage Yard
- ❖ Indoor Fabrication  
2 x (25 m x 100 m) 12.5 T x 2 Double Girder
- ❖ Portal Crane @ 10 Ton / 3 Ea (Outdoor)
- ❖ Mobile Crane 25 Ton
- ❖ Blasting Room (20 x 75 m)
- ❖ Painting Room (20 x 75 m)
- ❖ Draft Water 7 Meter
- ❖ Ship Capacity 10.000 DWT
- ❖ Wharf 14 Meter Wide – 165 Meter Dolphin
- ❖ Skidway Capacity 40 Ton/M2
- ❖ Slipway 90 x 250 Meter, Capacity 6000 TLC 3 Line @30 Meter
- ❖ Winch Capacity 50 Ton
- ❖ Docking/Undocking Balloon - 20 Airbags
- ❖ Lighting 24 hours

### Customer List

No	Customer	Ship Name	Ship Type	Dimension		
				L	B	D
1	Prakitri Hasta Dharma, PT	Sabuk Nusantara	Passenger	67	16	5
2	Prakitri Hasta Dharma, PT		Passenger	24	6	2
3	Dharma Wahana Tata, PT	Antares I	SPOB	30	7	2
4	Trans Continental, PT	Permata 18	LCT	60	12	3
5	Navigation Divition - Kupang	KM. Mina	Navigation Boat	60	10	3
6	Navigation Divition - Kupang	KM. Merpati	Navigation Boat	60	10	3
7	Borneo Perkasa Samudra, PT	Borneo II	Barge	98	24	3



## **LINTECH SEASIDE FACILITY ( LSF )**

### **PT. LINTECH DUTA PRATAMA**

Office & Workshop : Wirajatim Industrial Estate  
Jl. Mastrip 70 Karangpilang – Surabaya  
Lintech Seaside Facility : Daendels Street, Paciran Cape  
Lamongan, 74 KM from Surabaya  
Phone : (031) 7666891  
Fax : (031) 7664604  
Email : [admin@lintech.co.id](mailto:admin@lintech.co.id)  
Website : [www.lintech.co.id](http://www.lintech.co.id) & [www.lsf.co.id](http://www.lsf.co.id)

CONTACT US....

